



Whether you are managing or working on the highway network, one of the key enablers to help you complete tasks efficiently and cost-effectively is knowledge; knowledge of what is on the network, as well as its current condition and location. Capturing this information is not always simple and, with a growing number of vehicles using our highways, getting access to the network is becoming increasingly difficult.

To make this easier, Omnicom Engineering developed OmniSurveyor3D, a video surveying system that brings the network to your desktop. By capturing data in this way, organisations can quickly access any section of their network without having to leave the office, reducing the number of site visits and creating savings in costs, time and carbon emissions.



The key benefits of the system are:

- Greater understanding of the network and asset locations.
- Significant reductions in the need for roadside visits, increasing efficiency and reducing costs.
- Increased road network safety for employees and contractors.
- Improved asset management, resource and network utilisation.
- Greater stakeholder engagement and enhanced customer service.
- No disruption to traffic flow.
- Flexible delivery approach to accommodate budgetary constraints.

The system is vehicle mounted and surveys are undertaken at traffic speeds within normal flow to reduce any impact on other highway users. With its configurable camera set-up, the system can be adapted to meet specific client requirements including capturing footway, carriageway or bridge detail. The end user software is easy to use and has a number of useful features, allowing clients to undertake planning, design, surveying and inspection from the safety of the office. All data has a spatial and linear position and can be openly exported to use with many third party products such as word processors, databases and geographical information systems.

OMNISURVEYOR3D®

Features:

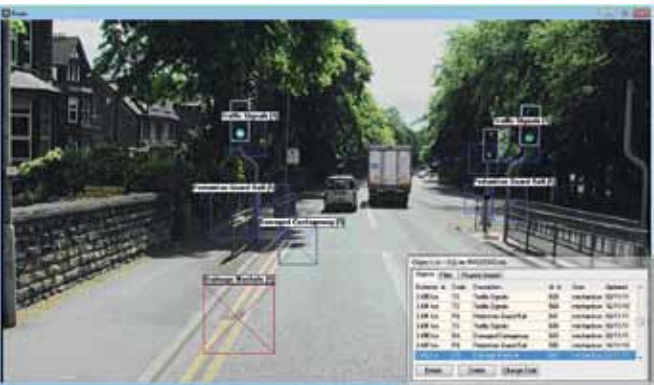
- Create or update asset and infrastructure information to support Asset Management, Road Maintenance Management (RMMS), and Geographic Information Systems (GIS) from the imagery.
- Undertake accurate and auditable measurements throughout the highway network, including assessment of low bridge clearance.
- Overlay third party condition data (e.g. road surface condition information) within the video to provide a visual context to its network location and surrounding environment; especially useful when looking at accident and high-risk sites.
- Generate virtual design layouts of proposed work sites or 'yet to be built' infrastructure through the integration of three-dimensional models to assist in the generation of Chapter 8 plans and traffic calming.
- Integrate with laser scanning technology, enabling creation of three dimensional point clouds.
- Plan winter maintenance and gritting schemes.
- Undertake office-based driver route learning.
- Use in call centre, customer, member or other stakeholder interactions.



VIRTUAL DESIGN LAYOUT



MEASURING TOOL



ASSET IDENTIFICATION



INFRASTRUCTURE LiDAR CAPTURE

For further information on our product range, please contact Omnicom Engineering Limited

+44 (0)1904 778 100
omnicomengineering.co.uk



AGENT DETAILS