



Recent years have seen increased pressure on rail owners to provide greater network availability for both passenger and freight services. The challenge for maintainers is to provide greater availability whilst still managing and maintaining the railway as efficiently and, in accordance with standards, as safely as possible.

To help maintainers meet this challenge, Omnicom has developed a vehicle-mounted inspection system called Omninspector. This captures data that can then be used by track inspectors to undertake basic visual inspections from their desktop rather than trackside. It is designed to inspect either plain line or more complex sections, such as Switches & Crossings (S&C).



The key benefits of the system are:

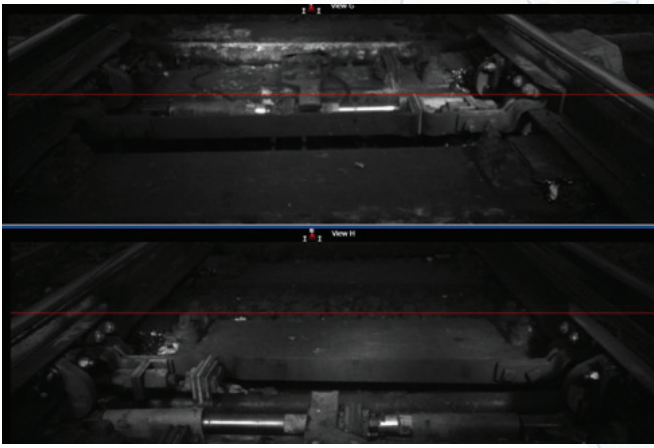
- Conduct inspection of track from safety of the office environment.
- Weekly inspections conducted safely from the office.
- An auditable electronic record of all defects can be created.
- Improved data management, as electronic records can be easily shared across the organisation.
- Improved quality and consistency of track defects detection.
- Significant cost reductions due to reduced site visits.
- Greater access to track condition information for all aspects of the organisation, from executive through to engineer.

The vehicle-mounted capture system collects high-resolution images of the rail and other track components including stretcher bars, swan necks and insulated block joints. All images are synchronised and are accurately positioned both linearly and spatially. The system not only improves the safety of the workforce by enabling remote inspection, but also enables checking track circuit bonding or remote scoping of remedial works. As the system is vehicle-mounted, data can be captured without adversely impacting the existing system timetable.

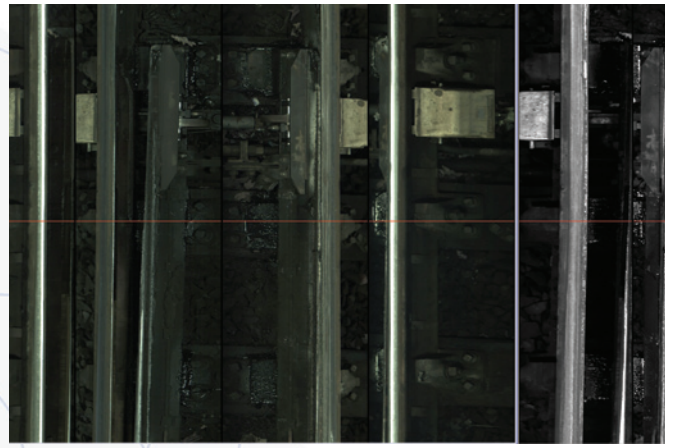
OMNIINSPECTOR®

Features:

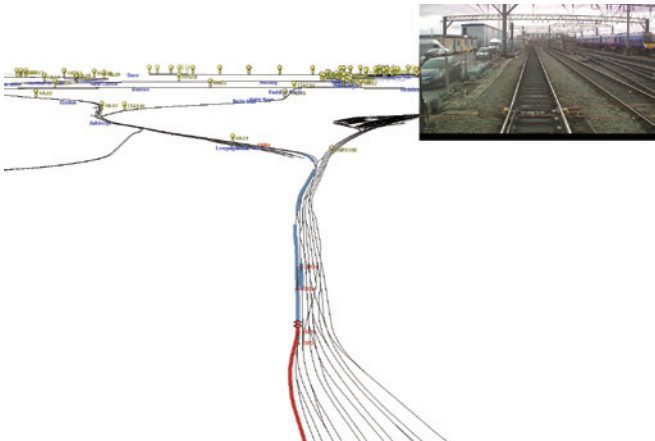
- Navigate the network easily by selecting specific patrols or moving to set locations.
- Play back images at predefined or user-selected speeds.
- Multiple views of the railway infrastructure including:
 - inner, outer and top section of each rail
 - forward and rear view of the four foot
 - forward-facing HD view
 - current location of a track level map.
- Automatically tag defects with accurate location for reporting.
- Interface with third party measurement systems such as track geometry.
- Patrol routes mimic actual track walk routes.
- Save and export high-resolution images of any view.
- Data is available 12 hours after vehicle run.



FORWARD AND REAR VIEW OF THE FOUR FOOT



INNER, OUTER AND TOP SECTION OF EACH RAIL



CURRENT LOCATION ON A TRACK LEVEL MAP



FORWARD FACING HIGH DEFINITION VIEW

For further information on our product range, please contact Omnicom Engineering Limited

+44 (0)1904 778 100
omnicomengineering.co.uk



AGENT DETAILS